

Edgcumbe

Presbyterian Church

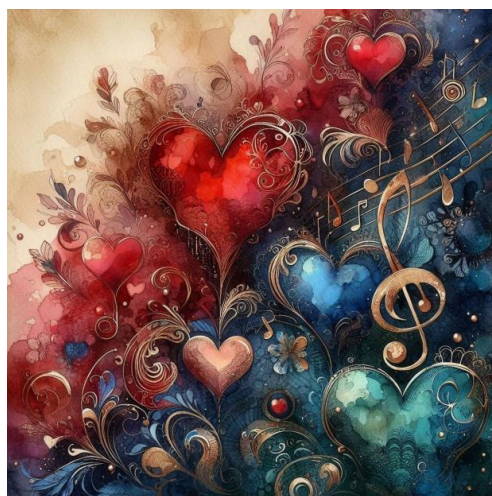
Midweek Update

December 11, 2024

In this issue: Sabbatical Note from Personnel, listening and discerning, Dec Mission, Christmas Evening worship, Year End Giving



Note from Personnel Elder LaGretta regarding a 2026 Sabbatical



A small committee has begun working on an application to the Lilly Foundation to fund our pastors' 2026 sabbatical which answers the question: "**What makes your heart sing?**" The pastors' sabbatical will be for three months.

This Sunday in worship we will introduce this process, and next Sunday (Dec 22nd) we will be holding a meeting after worship to share more about this process and seek your input into our current ideas. Because this significant monetary grant calls for an engaged congregation during the sabbatical, we are in great need of your involvement and creativity.

Please join us for worship this Sunday and in the parlor after worship next Sunday to become a part of this important process. In addition, if you feel led to join the sabbatical committee please speak with Jane Tafel, Meredith Holt, LaGretta Lunde or Pastors Luna or Phil.

reflections on listening and discernment for what makes one's heart sing...

this fall when personnel and the pastors began exploring how to support a 2026 sabbatical time, we turned to the lilly foundation which offers a limited amount of grants to congregation for financial help during a sabbatical time. and, one of the biggest learnings we had is that the lilly grant wants to be **a process of renewal for everyone**—both the pastors **and** the congregation. so, this question—*what makes your heart sing?*—will be weaving in and through our conversations and worship over these next months.

for me, i knew instantly that this was **an invitation to move into prayer** and ask with holy spirit how does my heart want to sing?? for instance, i knew there would be quick answers, like *spending time in nature*, but i knew enough to ask with holy spirit, in case there was something i

could not see. and then i spent some time in waiting and listening. and eventually another answer came—in a tiny internal voice but with a clarity and certainty: *singing*. now, holding these two heart-dreams, a theme is being proposed for the sabbatical grant of ***singing with creation***.

dreaming has been relegated as time-wasting and non-practical in our culture, but oftentimes there are powerful truths in our dreams. just even as i write this, it allows me to see the threads of connection between dreaming and a heart that sings. advent is certainly a time where we have biblical figures who are dreaming and heart-singing, so it seems like this far off sabbatical time is actually even inviting us deeper into the advent story in this present moment....i am actually kind of in awe about this, like holy spirit is weaving everything together...

in terms of you, dear edgcumbe community, there is now a larger invitation at hand—to be in discernment about the congregation’s renewal process through the sabbatical time. and with that, a request—**would you be willing to be prayerful about listening for those things which would make your heart sing?** i think, not only as individuals, but the community of edgcumbe...what is shimmering and calling your hearts at this time? and might there be some intersections with the threads of being in nature as well as singing??

let’s surrender all of these ponderings, and dreamings, and listenings into holy spirit’s care....and ask for god’s will to open the doors that are ours to walk through, and to guide us in each step of this sabbatical way....

holy spirit, in this holy moment, you be in charge,
and we will follow you, trusting that your direction will lead us to peace!

in joy!! ~pastor luna 

December Mission: Neighborhood House

Neighborhood House serves people from over 50 different cultural backgrounds with programs



in youth programming for ages 10-18, tutoring, parent and early childhood education, and food and housing support. For folks needing food support, **appointments are made online to visit the Wellstone Center food shelf twice per month.**

Another of their most important programs is fresh produce distribution over the winter months. **(November – May) distribution will take place at Metro State University in St. Paul.**

During each event, volunteers distribute approximately 3,000 pounds of food to approximately 75-100 families on average. Here are the winter distribution dates:

Metropolitan State University - Student Center Room
101 690 E 7th St., St. Paul, MN 55106

December 18 at 2:30-4:00pm
January 8 at 2:30-4:00 pm
February 12 at 2:30-4:00 pm

March 12 at 2:30-4:00 pm

Edgcumbe is linked to Neighborhood House through our own food shelf and twelve step program support. Please watch our newsletter this month for more details about Neighborhood House including other programs for education and youth. They are also actively looking for both employees and volunteers at this time.

For December, Edgcumbe mission team asks for your support for this vital community service group. You can contribute by putting "December Mission" in the memo box on Give Now (www.epchurch.org), or on the memo line of your check.

Christmas Evening Worship at Edgcumbe on December 24th

Christmas Evening Candlelit worship will be Tuesday, December 24th at 4pm. Jenya and the entire music program have been rehearsing this past month, so it plans to be extraordinary as always! All are warmly welcome!!

Year-end Giving

Thank you for your generous giving to the work and ministry of Edgcumbe Church over the past year. Remember that for donations to be counted for the 2024 tax year, they need to be received in the church office on or before December 31, 2024. Donations can also be made through the church website by clicking on the GIVE NOW button in the upper left. Thank you!